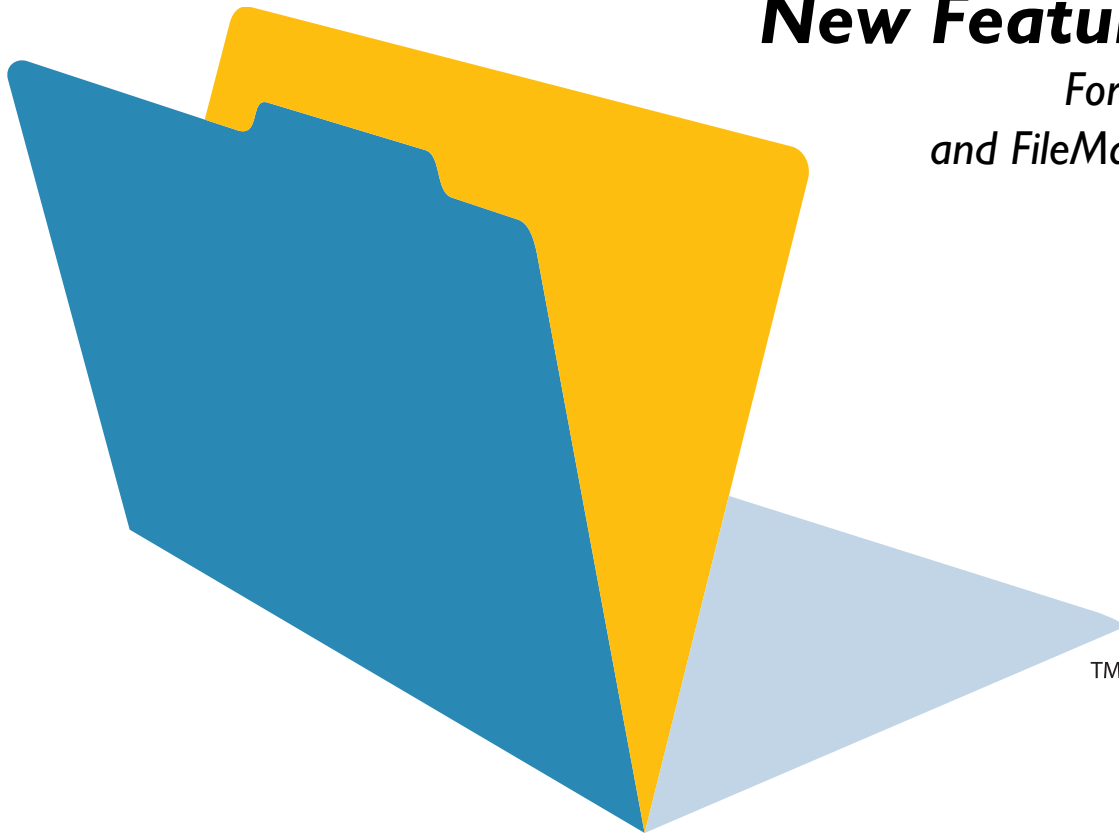


FileMaker

Installation and New Features Guide

*For FileMaker Pro 7
and FileMaker Developer 7*



TM

© 2004 FileMaker, Inc. All Rights Reserved.

FileMaker, Inc.
5201 Patrick Henry Drive
Santa Clara, California 95054

FileMaker is a trademark of FileMaker, Inc., registered in the U.S. and other countries, and ScriptMaker and the file folder logo are trademarks of FileMaker, Inc.

FileMaker documentation is copyrighted. You are not authorized to make additional copies or distribute this documentation without written permission from FileMaker. You may use this documentation solely with a valid licensed copy of FileMaker software.

All persons and companies listed in the examples are purely fictitious and any resemblance to existing persons and companies is purely coincidental.

Credits are listed in the Acknowledgements document provided with this software.

For more information, visit our web site at www.filemaker.com.

Edition: 01

Contents

Chapter 1

Before you begin

About this guide	5
Registration and customer support	5
About the license key	5
Hardware and software requirements	6
Networking requirements	6
Web publishing requirements	7
Requirements for advanced features (Windows)	7
Requirements for advanced features (Mac OS)	7
Features not supported in Mac OS X	7
Features not supported in Windows	7
Opening files from previous versions	7
Updating your User Dictionary	7
Automating your installation	7

Chapter 2

Installing FileMaker Pro in Windows

Installation notes	9
Installing FileMaker Pro	9
Installing FileMaker Pro from the command line	10
Where files are stored on your hard disk	10
Uninstalling, modifying, or repairing FileMaker Pro	10
Changing the FileMaker Pro cache size	10
Where to go from here	11

Chapter 3

Installing FileMaker Pro in the Mac OS

Installation notes	13
Installing FileMaker Pro	13
Where files are stored on your hard disk	14

Installing ODBC client drivers in Mac OS X	14
--	----

Adjusting the FileMaker Pro cache	14
-----------------------------------	----

Where to go from here	15
-----------------------	----

Chapter 4

New features

New features in FileMaker Pro 7	17
---------------------------------	----

File improvements	17
-------------------	----

Fields and layouts improvements	19
---------------------------------	----

Redesigned status area	20
------------------------	----

Scripting improvements	20
------------------------	----

New functions	20
---------------	----

Calculation improvements	20
--------------------------	----

Web publishing improvements	20
-----------------------------	----

Security documentation	21
------------------------	----

New and updated templates	21
---------------------------	----

Conversion of dates with two-digit years	21
--	----

Hands-on, task-oriented tutorial	22
----------------------------------	----

New features in FileMaker Developer 7	22
---------------------------------------	----

Integrated Developer Utilities	22
--------------------------------	----

Improved Script Debugger	23
--------------------------	----

More powerful Database Design Report feature	23
--	----

New file maintenance tools	23
----------------------------	----

New Custom Functions utility	23
------------------------------	----

Chapter 1

Before you begin

Welcome to your FileMaker® software. FileMaker is designed to help you manage information easily and effectively.

About this guide

This *Installation and New Features Guide* tells you how to install FileMaker Pro 7 or FileMaker Developer 7 on your Windows or Mac OS computer, and introduces new features in the software.

Note This guide uses “FileMaker Pro” to refer to both FileMaker Pro and FileMaker Developer, unless describing specific FileMaker Developer features.

The *FileMaker Pro User’s Guide* provides essential information to get you working productively right away. If you’ve never used FileMaker Pro, work through the *FileMaker Pro Tutorial* to try out the major features. For details and comprehensive, step-by-step procedures, see FileMaker Pro Help.

The FileMaker Developer *Developer’s Guide* describes additional features available in FileMaker Developer, including the Developer Utilities, the Database Design Report feature, the File Maintenance tools, the Script Debugger, and the Custom Functions utility.

Note When a feature or procedure is specific to a particular platform, you see instructions and illustrations that are also specific to that platform. For features or procedures that are similar on both platforms, you may see illustrations for either Windows or the Mac OS.

Registration and customer support

Please take the time to register your product during installation, through the FileMaker web site at www.filemaker.com/register, or by choosing Help menu > Register Now in FileMaker Pro.

For information about technical support and customer service, see: www.filemaker.com (North American customers) www.filemaker.com/intl (customers outside North America)

or choose Help menu > FileMaker on the Web. At the web site, you will find the service options available to North American customers, as well as links to FileMaker worldwide sites, answers to frequently asked questions, and access to the TechInfo Knowledge Base used by Technical Support. If you do not have access to the web, please refer to the FileMaker Service Directory included in the software box. North America customers can also call (800) 965-9090 to learn about the service options available.

About the license key

FileMaker software comes with a unique, 35-character-string license key. Do not lose this license key; it cannot be replaced. We recommend that you keep the license key in a safe place in case the software ever needs to be reinstalled.

Important You must enter the license key during installation or the software will not install.

The license key ensures adherence to the single user license agreement, which generally allows for use of one (1) copy of the Software on a single computer at a time (refer to your Software License). If the license key is invalid or if another copy of the application installed with that same license key is running on the network, the FileMaker Pro application displays this error message: “The maximum number of licensed users are currently using this copy of FileMaker Pro. Please refer to the License Key section of your software documentation for further instructions.”

If you receive this error message, you have entered a duplicate license key. To install FileMaker Pro on multiple computers, you must have a unique license key for each user, or obtain a volume license. You must license one copy of FileMaker Pro for each computer.

Hardware and software requirements

To install and use FileMaker Pro, you need the CD-ROM in the FileMaker Pro package and the following minimum equipment and software:

Windows requirements

- Pentium 300 MHz or faster
- 64 MB total RAM for Windows 2000, 128 MB total RAM for Windows XP
- Windows 2000 SP4, Windows XP SP1
- a hard disk with at least 100 MB of free space for FileMaker Pro, or at least 140 MB of free space for FileMaker Developer (for a minimum installation of the application only)
- a CD or DVD drive

Mac OS requirements

- Apple G3 or G4 (no G3 upgrade cards)
- 128 MB RAM
- Mac OS X versions 10.2.8 and 10.3.2
- a hard disk with at least 140 MB of free space (for a minimum installation of the application only)
- a CD or DVD drive

Important note about supported operating systems

At the time this book was written, FileMaker, Inc. tested FileMaker Pro 7 with the Windows and Mac OS operating systems listed above. FileMaker Pro may or may not work with newer operating system releases. For information on newer operating systems, see www.filemaker.com.

Networking requirements

If you plan to share FileMaker Pro files with other computers on a network, you need to know which type of network you’re using. FileMaker Pro 7 supports the TCP/IP network protocol.

If you’re not sure which network protocol is installed and in use on your computer, check with your network administrator before you begin installation.

To connect to a network, your computer must also have a network card and the required software.

Web publishing requirements

To publish a database on the web using FileMaker Pro Instant Web Publishing, you need a host computer with access to the Internet or an intranet via TCP/IP.

Important Access to the Internet requires an Internet service provider (ISP). FileMaker Pro does not provide an Internet account for you.

Requirements for advanced features (Windows)

Some of the advanced features of FileMaker Pro for Windows require additional software.

FileMaker Pro advanced feature	Software requirement
Send Mail script step	A Mail API (MAPI) enabled email client software
Phone dialing	Phone dialer or other Telephony API (TAPI) compliant software
ODBC features	Microsoft Data Access Components (MDAC) version 2.6, 2.7, or 2.8. To update MDAC software, use Microsoft Windows Update or see the Microsoft web site at www.microsoft.com .
Insert QuickTime movie and image files	QuickTime 6 software (available at www.apple.com)

Requirements for advanced features (Mac OS)

Some of the advanced features of FileMaker Pro for Mac OS X require additional software.

FileMaker Pro advanced feature	Software requirement
Send Mail script step	Microsoft Entourage or Mac OS X Mail e-mail client software
Insert QuickTime movie and image files	QuickTime 6 software (available at www.apple.com) if it was not included with your Mac OS version)

Features not supported in Mac OS X

In Mac OS X, FileMaker Pro does not support the Dial Phone, Insert Object, Send DDE Execute, and Update Link script steps.

Features not supported in Windows

In Windows, FileMaker Pro does not support the Perform AppleScript and Speak script steps.

Opening files from previous versions

FileMaker Pro 7 can open files created in earlier versions of FileMaker Pro. See the *Converting FileMaker Databases from Previous Versions* guide for information.

Updating your User Dictionary

If you added words to a User Dictionary in a previous version of FileMaker Pro, you may want to use it with FileMaker Pro 7. See the *Converting FileMaker Databases from Previous Versions* guide for more information about converting a User Dictionary.

Automating your installation

If you're installing multiple copies of FileMaker Pro under a volume license, you can automate the process using the Assisted Install.txt file on the FileMaker Pro CD, which lets you bypass the normal install dialog boxes. For more information, see the volume license installation instructions. For information on volume licensing, see www.filemaker.com.

Chapter 2

Installing FileMaker Pro in Windows

Before you begin the installation process, exit other open programs and save your work. For late-breaking information about FileMaker Pro, browse the contents of the CD and view the Read Me file or visit www.filemaker.com.

Installation notes

Before you install FileMaker Pro, review the following notes:

- To install FileMaker Pro in Windows 2000 Professional or Windows XP, you must log on with Administrator privileges.
- If your computer is running virus protection software, turn it off prior to installing FileMaker Pro, and then turn it back on afterwards.
- When you are installing FileMaker Pro, you will see the License Agreement panel. Read the Software License Agreement. If you accept the terms of the license agreement, click **I accept...**, then click **Next**.
- By default, FileMaker Pro will be installed in this folder: `C:/Program Files/FileMaker/FileMaker Pro 7`. During installation, you can choose another drive or another folder if you wish.
- During installation, you can choose whether to install all program features (**Complete**), or to install only selected portions of the program (**Custom**). For example, you may choose not to install certain features in order to save disk space.
- At the start of installation, you choose a language version for the FileMaker Pro application. The default selection matches your operating system language. A Complete install will install only the language version you choose. You can install additional language versions by choosing Custom install, then selecting other language packs from the list of supported languages.

Installing FileMaker Pro

You must use the installation program to install FileMaker Pro—you can't install FileMaker Pro by dragging files to your hard disk.

If you want to create an install log file that lists the registry entries and path of all installed files, you must install FileMaker Pro 7 from the command line. See “Installing FileMaker Pro from the command line” on page 10.

To install FileMaker Pro on your hard disk:

1. Insert the CD into your CD or DVD drive.
The FileMaker CD window appears.
2. Click the Install icon.

Click to install
the application



The FileMaker Pro InstallShield Wizard appears.

3. Install FileMaker Pro by following the on-screen instructions.

For details about installation issues, see “Installation notes” on this page.

4. When the installation is complete, click **Finish**.

When installation completes, you see a Product Registration panel. You can register online if you have an Internet connection. If you choose to register by letter or by fax, you can fill out the form on your computer, print a copy of the form, and mail or fax it to FileMaker.

Installing FileMaker Pro from the command line

To install FileMaker Pro from the command line and create an installation log file:

1. Insert the FileMaker Pro 7 CD.
2. Open a command window.
3. In the command window, type

```
E:\Files\setup.exe /v"/Lr C:\FMP7InstallLog.txt"
```

4. Follow the on-screen instructions.

The FMP7InstallLog.txt file will be located on the C drive of your hard disk. You can view it with WordPad or a word processing program.

Note If your CD or DVD drive is not located at drive E, then substitute the correct letter for your drive.

Where files are stored on your hard disk

The FileMaker Pro installer copies files to several folders on your hard disk, depending on the installation options you choose and your operating system. If you performed a command line installation and specified an install log file, you can view the install log file, which lists the location of each installed file.

Uninstalling, modifying, or repairing FileMaker Pro

You can use the Windows Add or Remove Programs control panel to uninstall FileMaker Pro, replace missing or corrupt files, or to change which features are installed. For more information about using Add or Remove Programs, refer to Windows Help.

Note Uninstalling doesn't delete files that you've created, as long as they are named differently than the sample and template files that are installed with FileMaker Pro.

When you modify or repair FileMaker Pro, you may be prompted to enter your license key.

Changing the FileMaker Pro cache size

FileMaker Pro maintains an internal cache of portions of your database. Depending on your computer's memory configuration, you may want to adjust the cache size to improve performance.

You may want to consider increasing the cache size if you plan to:

- work on a large database file
- work on several database files at once
- host database files
- use a database file that contains many graphics
- insert a large graphic into a database file

Consider decreasing the cache size if you plan to run several applications at the same time and you have a limited amount of memory (RAM) installed.

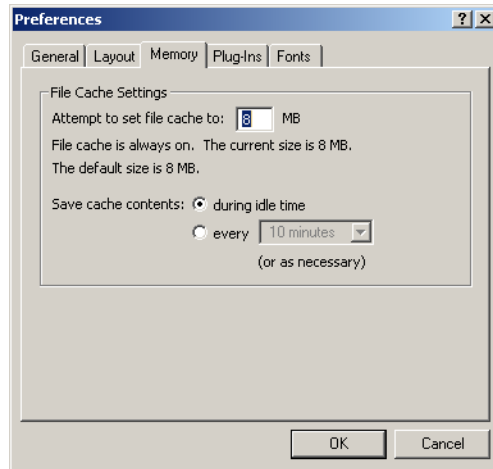
Note When you increase or decrease the FileMaker Pro cache size, you also increase or decrease the amount of memory needed to run FileMaker Pro.

For more information on managing memory, see the documentation that came with your computer.

To change the cache size that FileMaker Pro uses:

1. In FileMaker Pro, choose Edit menu > Preferences.

The Preferences dialog box appears.



2. Click the Memory tab.
3. Type a number in the Attempt to set file cache to box.
4. Click OK.

The next time you start FileMaker Pro, the new cache size is used.

Where to go from here

After you install FileMaker Pro, you can immediately begin working with the application. Here are some suggestions on where to go in the documentation to get started:

- If you're new to databases, read chapter 1, "Using databases" and chapter 2, "Creating databases" in the *FileMaker Pro User's Guide* to learn basic database concepts.
- If you're new to FileMaker Pro, work through the lessons in the *FileMaker Pro Tutorial*.
- If you've used FileMaker Pro before, read chapter 4 of this guide to learn about new features available in FileMaker Pro 7 and FileMaker Developer 7.
- If you're a FileMaker Developer user, see the *Developer's Guide* for information on FileMaker Developer features.

Chapter 3

Installing FileMaker Pro in the Mac OS

Before you begin the installation process, quit other open programs and save your work. For late-breaking information about FileMaker Pro, browse the contents of the CD and view the Read Me file or visit www.filemaker.com.

Installation notes

Before you install FileMaker Pro, review the following notes:

- If your computer is running virus protection software, turn it off prior to installing FileMaker Pro, and then turn it back on afterwards.
- When you are installing FileMaker Pro, you will see the License Agreement panel. Read the Software License Agreement. If you accept the terms of the license agreement, click **Accept**.
- During installation, you can choose whether to install all the program files (an **Easy Install**), or to install portions of the program (a **Custom Install**). For example, you may choose not to install certain features in order to save disk space.
- An Easy Install installs FileMaker Pro in the language matching your operating system. You can install additional language versions by choosing Custom install, then selecting other language packs from the list of supported languages.

Installing FileMaker Pro

You must use the installation program to install FileMaker Pro—you can't install FileMaker Pro by dragging files to your hard disk.

To install FileMaker Pro on your hard disk:

1. Insert the CD into your CD or DVD drive.

You see the disc's window on your screen. If you see only the disc icon, double-click the CD icon to open its window.

2. Locate and double-click the **FileMaker Pro 7** file.



3. Install FileMaker Pro by following the on-screen instructions.

When installation completes, you see a Product Registration dialog box. You can register online if you have an Internet connection. If you choose to register by letter or by fax, you can fill out the form on your computer, print a copy of the form, and mail or fax it to FileMaker.

4. Click **Quit** to leave the Installer.

Where files are stored on your hard disk

The FileMaker Pro installer copies files to several folders on your hard disk, depending on the installation options you choose and your operating system. When installation is complete, you can view the Installer Log File in the FileMaker Pro 7 folder. The log file lists the location of each installed file. You can view it with TextEdit or a word processing program.

Installing ODBC client drivers in Mac OS X

FileMaker Pro ODBC support allows you to interact with data from other applications, such as Oracle databases, on your computer or over a network. To install ODBC client drivers, use the ODBC Import Drivers Installer, located in the folder ODBC Import Drivers where you installed FileMaker Pro. For more information on using ODBC, see FileMaker Pro Help.

Adjusting the FileMaker Pro cache

Because Mac OS X dynamically allocates memory to applications as needed, there is no way to set a specific amount of memory to allocate to the FileMaker Pro application. However, you can adjust the FileMaker Pro cache size.

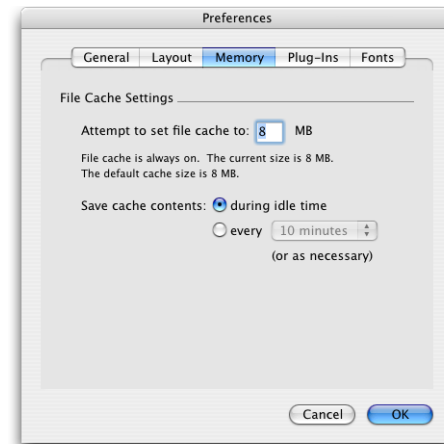
You may want to increase the cache size if you plan to do any of the following:

- work on a large database file
- work on several database files at once
- host database files
- use a database file that contains many graphics
- insert a large graphic into a database file

Consider decreasing the cache size if you plan to run several applications at the same time and you have a limited amount of memory (RAM) installed.

To change the cache size that FileMaker Pro uses:

1. In FileMaker Pro, choose the FileMaker Pro menu > Preferences and click the Memory tab.



2. Type a number in the Attempt to set file cache size to box.

3. Click OK.

The next time you start FileMaker Pro, the new cache size is used.

Where to go from here

After you install FileMaker Pro, you can immediately begin working with the application. Here are some suggestions on where to go in the documentation to get started:

- If you're new to databases, read chapter 1, "Using databases" and chapter 2, "Creating databases" in the *FileMaker Pro User's Guide* to learn basic database concepts.
- If you're new to FileMaker Pro, work through the lessons in the *FileMaker Pro Tutorial*.
- If you've used FileMaker Pro before, read chapter 4, "New features" in this guide to learn about new features available in FileMaker Pro 7 and FileMaker Developer 7.

If you're a FileMaker Developer user, see the *Developer's Guide* for information on FileMaker Developer features.

Chapter 4

New features

This chapter provides you with an overview of the new features and improvements in FileMaker Pro 7 and FileMaker Developer 7.

New features in FileMaker Pro 7

Note See FileMaker Pro Help for complete details on new features.

File improvements

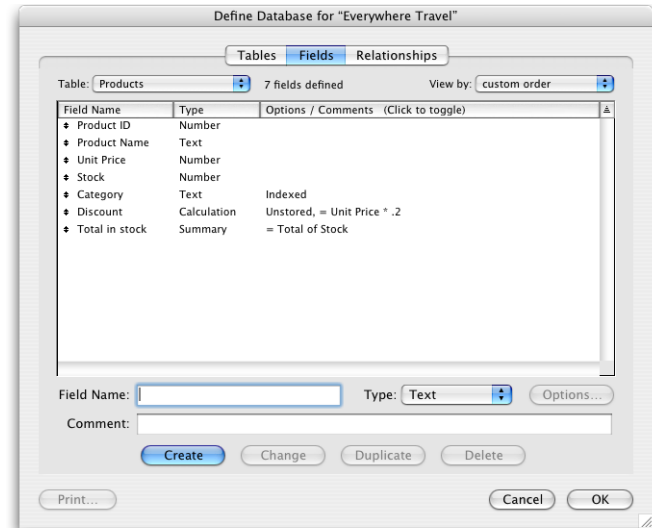
■ Multiple tables per file

A database file can contain as many tables as you need to organize your data, limited only by the amount of hard disk storage space.

Instead of having to create multiple files, you can now work with related data in multiple tables in one file.

■ Create tables, fields, and relationships in one window

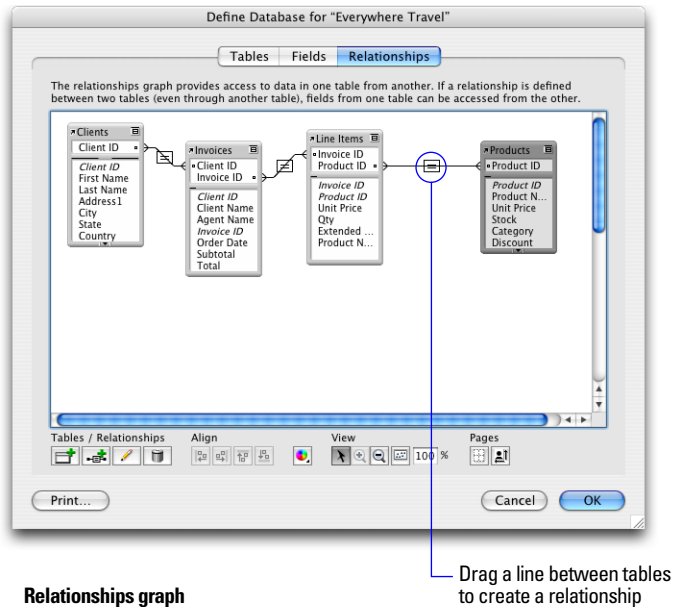
You create the tables and fields for your database, and create the relationships between tables in one place: the Define Database dialog box.



Define Database dialog box

■ Improved relational capabilities

You can now work with a graphical view of your database structure in the relationships graph.



You can base relationships on one or more match fields in each table. Match fields should be the same type; for example, number fields or a calculation field that returns a numeric result.

Relationships are always created between two tables, or, in the case of self-joining relationships, two occurrences of the same table in the relationships graph. You can connect relationships together in a series and access related data from any point within that series, but each relationship is created between only two tables.

Two or more related tables cannot form a cycle. Each series of relationships must have a beginning table and an ending table.

Relationships are bi-directional, although you can set independent record sorting, creation, and deletion options for each table in the relationship. You can add pairs of match fields to a relationship as necessary until you are able to establish the relational criteria you want.

You can create comparative relationships and use the following relational operators: = (equal), ≠ (not equal), < (less than), ≤ (less than or equal to), > (greater than), ≥ (greater than or equal to), and × (cartesian product).

The number of relationships is limited only by disk space.

■ New way to control access to database files

You can restrict what users can see and do in a database file by defining accounts and privilege sets.

Accounts authenticate users who are attempting to open a protected file. Each account specifies an account name and usually a password. Any user who cannot specify valid account information won't be able to open a protected file.

A privilege set specifies a level of access to a database file. There are many options available to limit database access, such as which layouts are viewable, which menus are available, and whether printing is permitted. Privilege sets can also restrict access to particular tables, records, or fields within a file. Each account is assigned a privilege set.

■ Multiple file conversion

Files that were created using previous versions of FileMaker Pro need to be converted for use with FileMaker Pro 7. You can use multiple file conversion to convert all the files that comprise a relational database solution or any number of standalone files. During conversion, FileMaker Pro won't overwrite any of your existing files.

For information on converting FileMaker Pro files, see *Converting FileMaker Databases from Previous Versions*. The PDF version is located in the Electronic Documentation folder (inside the English Extras folder).

■ **Multiple windows per file**

You can open more than one window per file. This allows actions such as viewing the same layout in a list view and a form view, or finding and sorting records differently in each window.

■ **Larger file sizes**

The maximum file size is 8 terabytes, limited only by available disk space. A terabyte is equal to 1024 gigabytes.

■ **More tables, fields, and records per file**

You can have a maximum of 1 million tables per file and 64 quadrillion records per table (over the lifetime of the file).

The maximum number of fields per table is 256 million (over the lifetime of the file).

■ **Improved file referencing between FileMaker Pro files**

A file reference is a named file path that identifies an external file, such as a related file, used by the current database file. In the Define References dialog box, you can manage named references and define one or more alternative paths to an external file.

■ **Store files of any type in container fields**

You can use container fields to store files such as:

- graphics, movies, photos, bitmaps, sounds of up to 4 GB per field
- documents, including Microsoft Word or Excel files, PDF files, and so on
- Multimedia file types supported by QuickTime 6.0
- OLE objects (Windows)

Fields and layouts improvements

■ **Greater storage capacity for text and number fields**

Text fields can contain up to 2 GB of letters, symbols, and/or numbers used as text per field repetition, limited only by available RAM and disk space.

Number fields can contain values up to 800 digits or other characters, and the negative values of the same range.

■ **Timestamp field type**

You can store dates and times in a field to reference a fixed point in calendar time.

■ **Global fields**

A global field is a field that contains one value that is used for all records in a file. Fields of any type (except summary fields) may now be defined to be a global field.

■ **Saving layout design changes**

You can save or revert layout changes manually or you can set an application preference to save your layout changes automatically when you leave Layout mode.

■ **Saving record changes**

You can set FileMaker Pro to display a confirmation dialog box when exiting a record in which data has been changed. You can enable or disable this confirmation dialog box on a layout-by-layout basis.

■ **Summary field improvements**

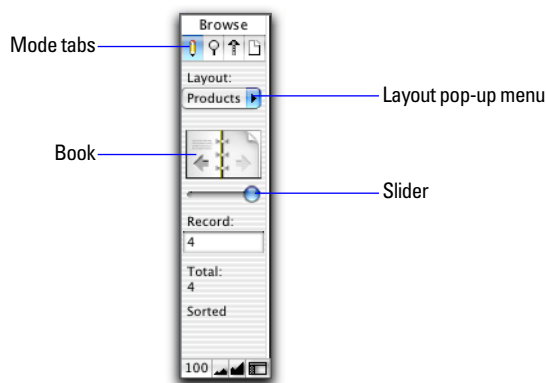
For repeating fields, you can now choose to summarize repetitions together or individually.

In a subsummary report, you can specify a summary field on which to sort in order to reorder data more logically.

■ Portal improvements

You can now add fields to a portal as you create the portal, and portal rows are maintained when exiting portals.

Redesigned status area



Scripting improvements

It is now possible to pass a parameter to a script. New script steps include:

- Steps for manipulating windows, for example, New Window and Move/Resize Window
- Steps for managing accounts, for example, Add Account and Reset Account Password
- Other steps, for example, Else If, Set Selection, Extend Found Set, and Constrain Found Set

New functions

New functions have been added in the following categories: Aggregate, Design, Get, Logical, Number, Text, Text Formatting, and Timestamp.

Calculation improvements

Improvements include: more precision, improved error handling, local variables, and comments in calculations.

Web publishing improvements

The Instant Web Publishing interface has been redesigned to look and function like the FileMaker Pro desktop application.

Configuring a database for Instant Web Publishing is easier because:

- You can publish any number of FileMaker Pro layouts directly to the web. You are no longer restricted by a limited number of predefined web views. This streamlines database design because you can develop one solution that works for all clients.
- Access to data, layouts, and fields is based on user accounts and passwords, as in the desktop application.
- Web users can perform complex, multi-step scripts. More than 70 script steps are now supported over the web.

Instant Web Publishing features a status area with toolbar icons and buttons, providing all the functionality web users need to interact with your web-based solutions:

- In Browse mode, web users can create, edit, duplicate, and delete records.
- Find mode allows more flexible and powerful searches—web users can now perform multiple find requests, omit search criteria, and extend (broaden) or constrain (narrow) existing find requests.
- Web users can work with data on any layout and layout view—they are no longer restricted to predefined views and forms for editing and finding data.
- Web users can dynamically change the layout view for the current layout to interact with data in form view, list view, or table view.
- Default field values are now populated over the web when records are created.

- The status area can be shown or hidden by the user, or hidden by the database designer for a custom interface.

Web users also benefit from other new FileMaker Pro 7 features.

- Access privileges are more tightly integrated with the database schema, so you can:
 - Manage user permissions to access specific records, layouts, and fields, and now, specific scripts.
 - Restrict sharing access based on specific technologies (Instant Web Publishing, XML, and so on).
 - Require users to specify both account and password data when logging in to secured files.
- When web users connect, individual, multi-threaded sessions are maintained—like web applications, their transactions are “remembered” across multiple screens. To the host machine, there is no difference between a session started from a web client or a FileMaker Pro client. This means that tasks performed by web users, such as creating found sets and sorting and navigating records no longer affect the database on the host computer.

For information on Instant Web Publishing, see the *FileMaker Instant Web Publishing Guide*, located in the Electronic Documentation folder (inside the English Extras folder).

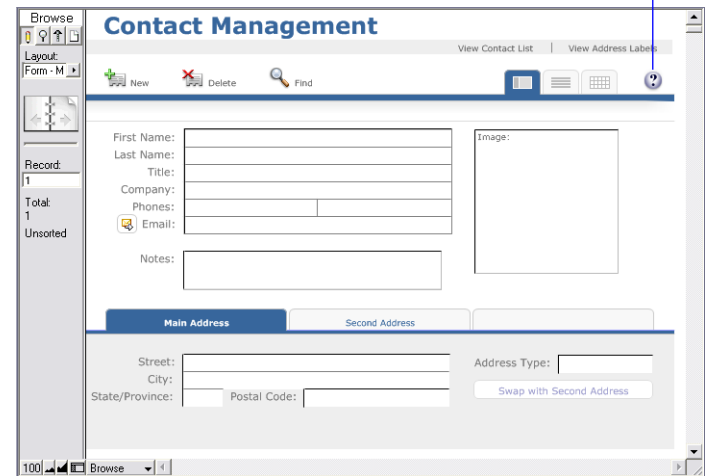
Security documentation

For information on recommended file protection practices, see the *FileMaker Security Guide*, located in the Electronic Documentation folder (inside the English Extras folder).

New and updated templates

FileMaker Pro comes with a collection of templates, which are pre-designed and formatted database files or web pages that you can copy and change for your own use. The templates have been updated in appearance and functionality.

Click here for information on using this template



For more information, see *Customizing the FileMaker Pro Templates*, located in the Electronic Documentation folder (inside the English Extras folder).

Conversion of dates with two-digit years

FileMaker Pro permits you to enter dates with two-digit years such as “4/4/99” and “12/12/03.” However, these dates are ambiguous because they do not specify the century; entering “11/16/53” could represent the year 1953, 2053, or the 53rd year in any other century.

When you enter dates with two-digit years into a date field, FileMaker Pro converts them to four-digit years using a conversion method described in the Help topic “Conversion of dates with two-digit years.” This conversion method may not convert the two-digit year dates that you enter into the century that you expect, which may result in inaccurate date entries. For more information, see the Help topic.

Hands-on, task-oriented tutorial

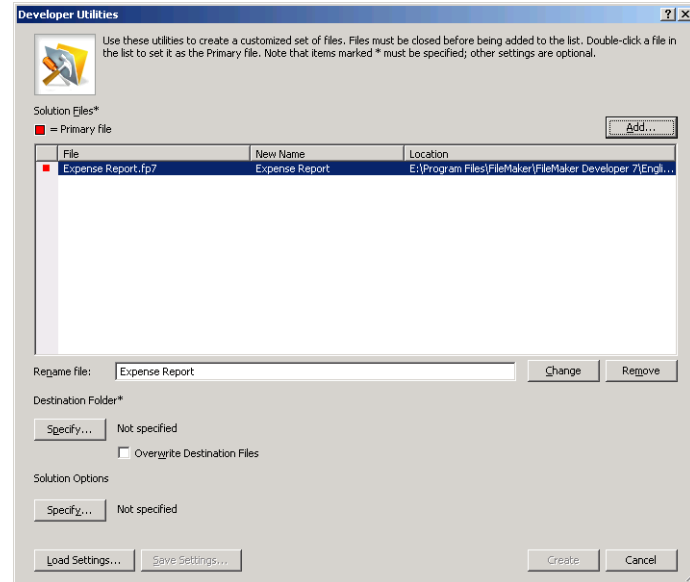
To get new users up to speed more quickly, FileMaker Pro features an extensive hands-on tutorial. Tutorial lessons guide you through common database tasks, including finding records and creating databases, relationships, calculations, scripts, and reports. See the *FileMaker Pro Tutorial*.

New features in FileMaker Developer 7

Note See the FileMaker Developer *Developer's Guide* for complete details on new features.

Integrated Developer Utilities

The Developer Utilities are integrated into FileMaker Developer to enable you to produce runtime database solutions. Using the Developer Utilities, you select the databases to be included in your runtime solutions and the settings to be applied to them.



Developer Utilities dialog box

The Developer Utilities enable you to:

- customize the Help and About menu items
- rename your solutions to reflect your own branding
- add your own logo or graphics to closing splash screens
- prevent users from modifying the structure of your databases

Improved Script Debugger

With the Script Debugger, you can easily set and clear breakpoints, single-step through your scripts, and run subscripts. The Script Debugger has been improved to work with the new multiple tables and multiple windows features of FileMaker Developer. No matter how many FileMaker Developer windows you have open, the Script Debugger window will remain on top. Access privileges that allow you to use the Script Debugger can now be applied to individual scripts.

More powerful Database Design Report feature

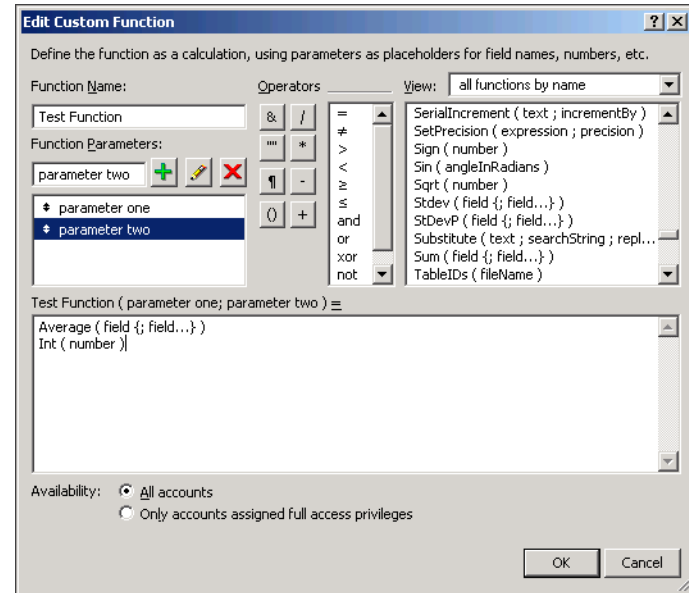
The Database Design Report feature produces schema reports of your databases in XML or HTML format. The Database Design Report has been updated to take into account all the new FileMaker Pro features. More database elements are included in the reports, and formatting has been improved to make the reports easier to use.

New file maintenance tools

File maintenance tools have been provided to help you develop more efficient databases. The Compact File tool removes free disk space from database files, reducing the file size and streamlining data access. The Optimize File tool improves file access speed by moving logically related data closer together. Both tools reduce disk-head movement. Improvements will be especially noticeable when you are using large files and performing finds or sorts, or executing scripts that operate on all records.

New Custom Functions utility

With the Custom Functions utility, you can create custom functions that can be reused anywhere in the database. Once you have written formulas for the custom function, you don't have to rewrite them to apply to other fields or be used in other scripts. You maintain and revise custom functions and the formulas they contain in one central location.



Edit Custom Function dialog box

Custom functions created in FileMaker Developer will also run in FileMaker Pro, so they can be used to replace third-party plug-ins for some purposes. Newly defined functions appear under their own category in the functions list of the Specify Calculation and Edit Custom Function dialog boxes. If you do not want to reveal your custom functions, you can disable the display of them in these dialog boxes.

